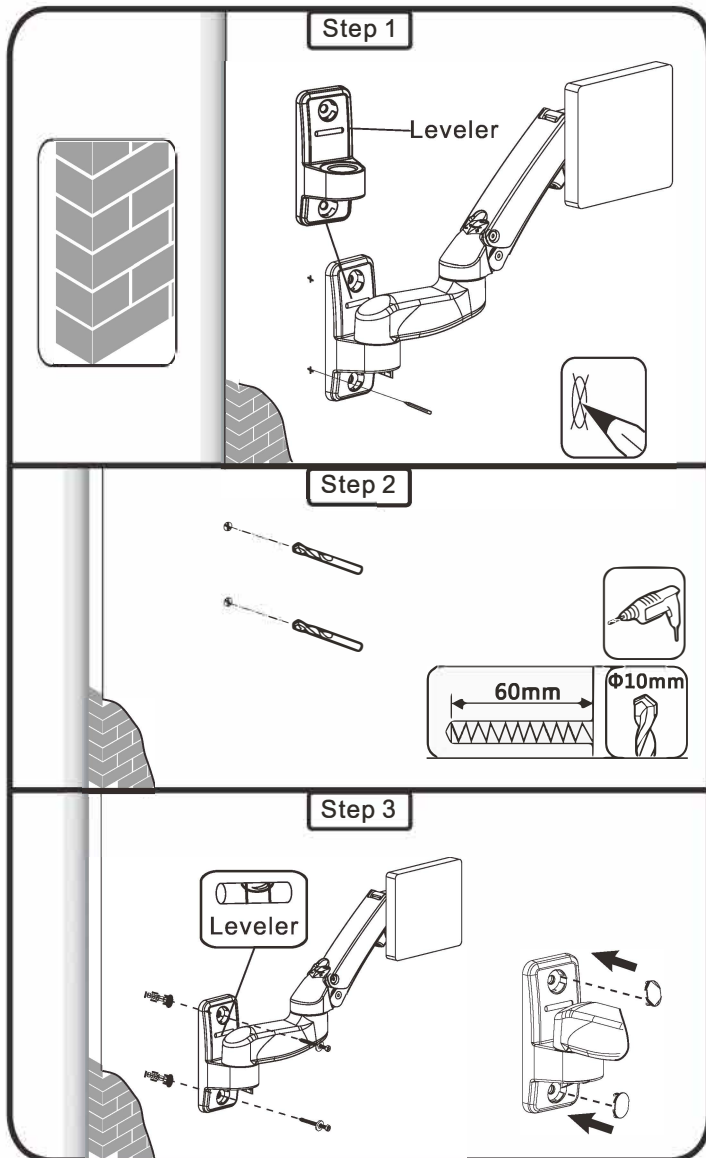
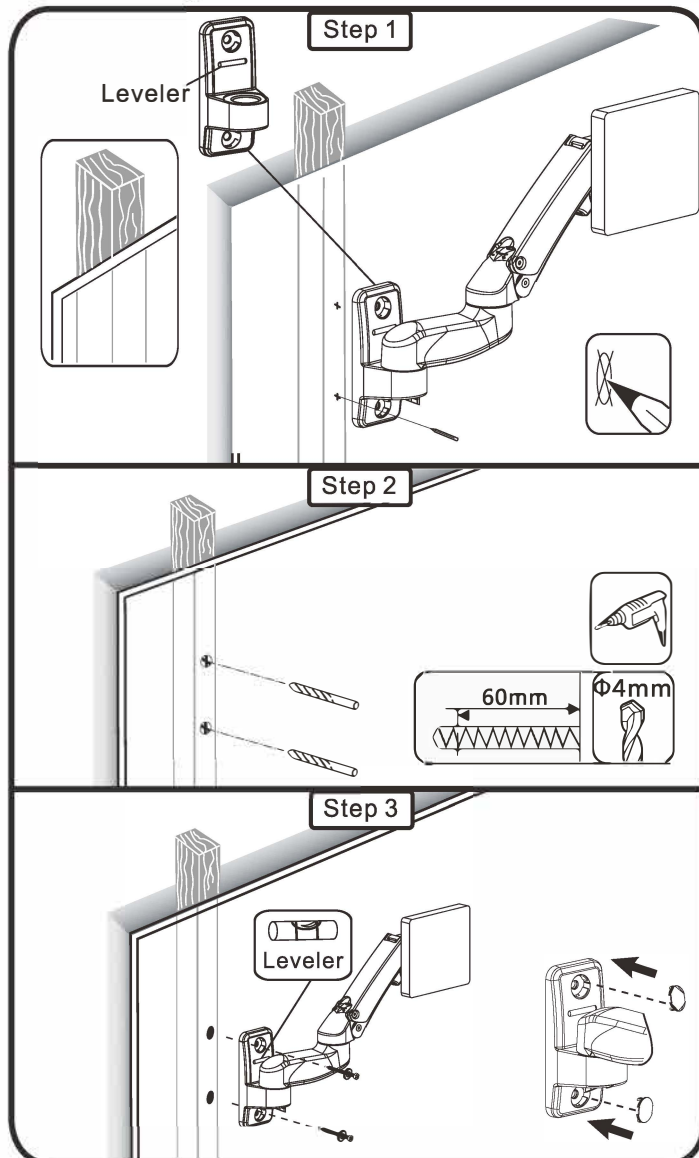




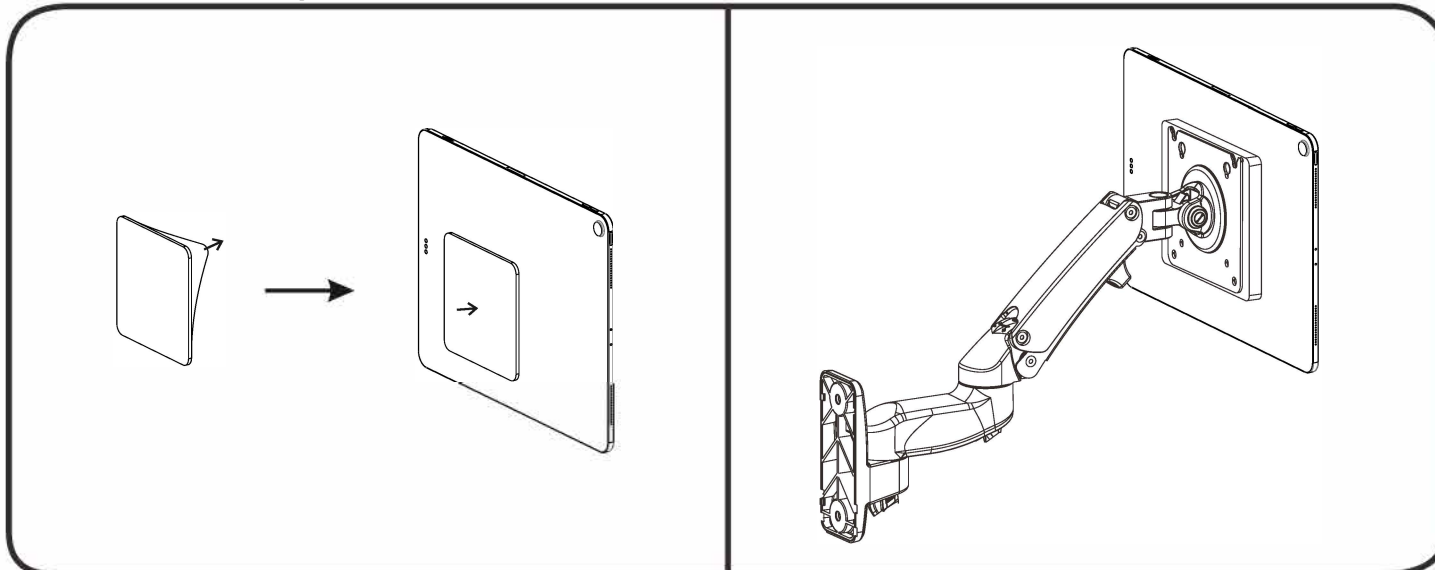
1A Install flexi mount onto masonry or solid concrete



1B Install flexi mount onto wood stud



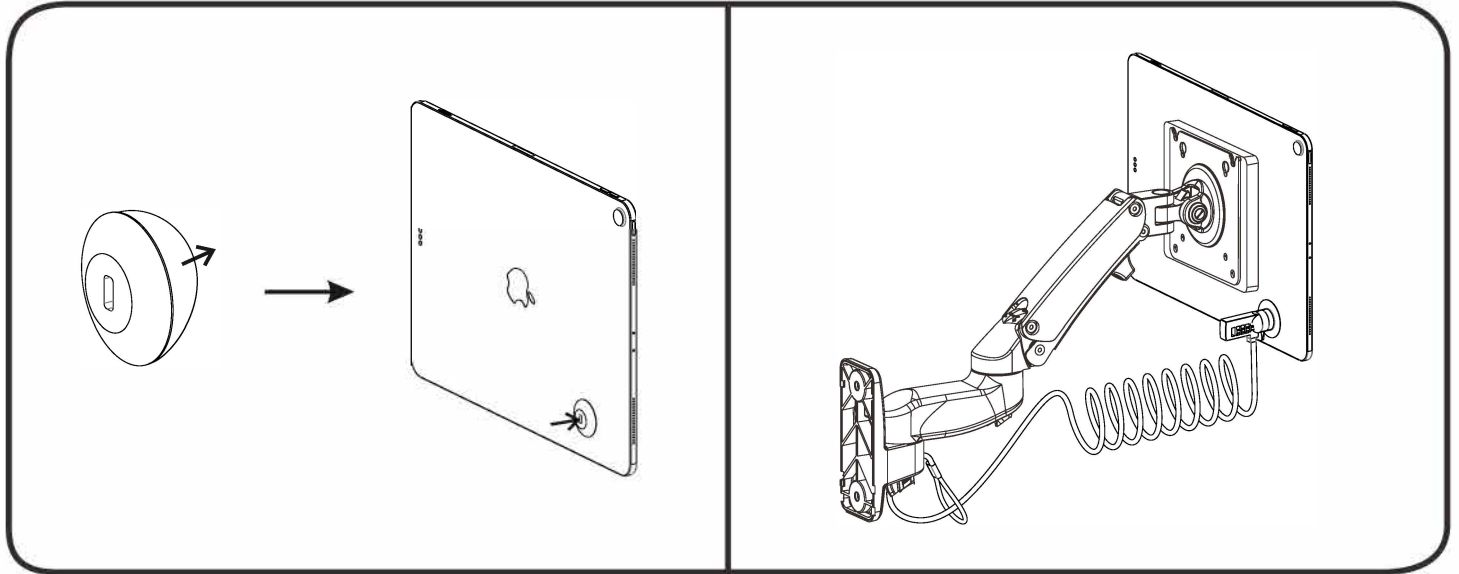
2 Attach metal plate on the tablet



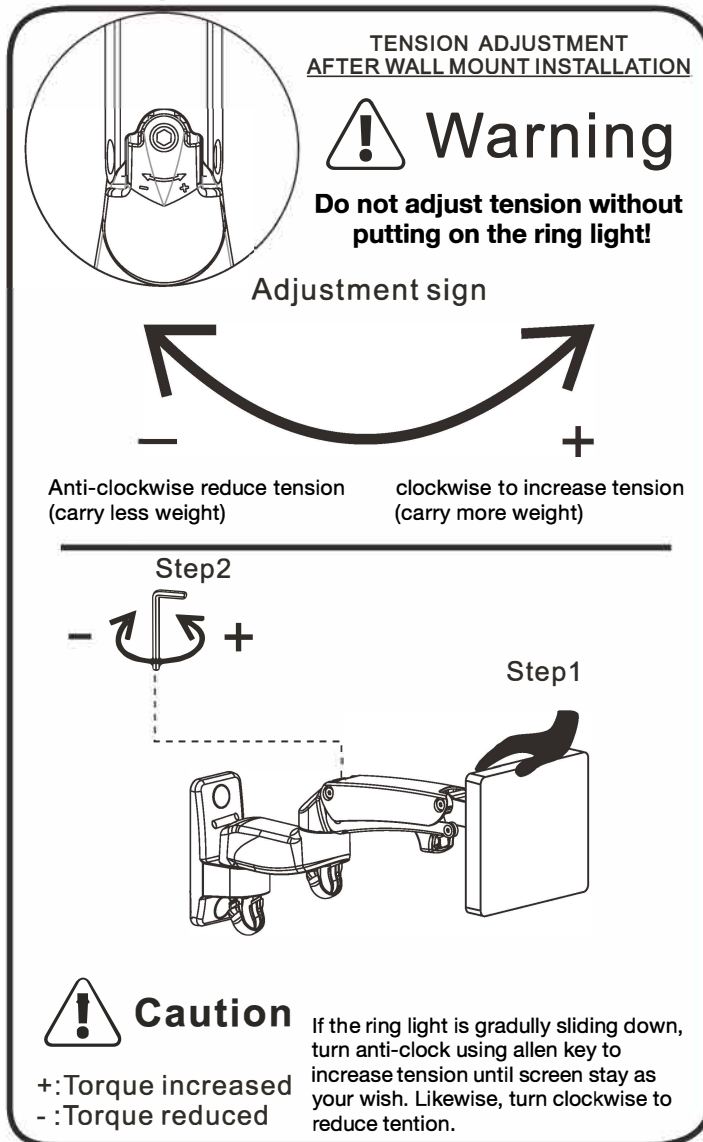
ASSEMBLY INSTRUCTIONS

Magnetic Tablet Wall Stand

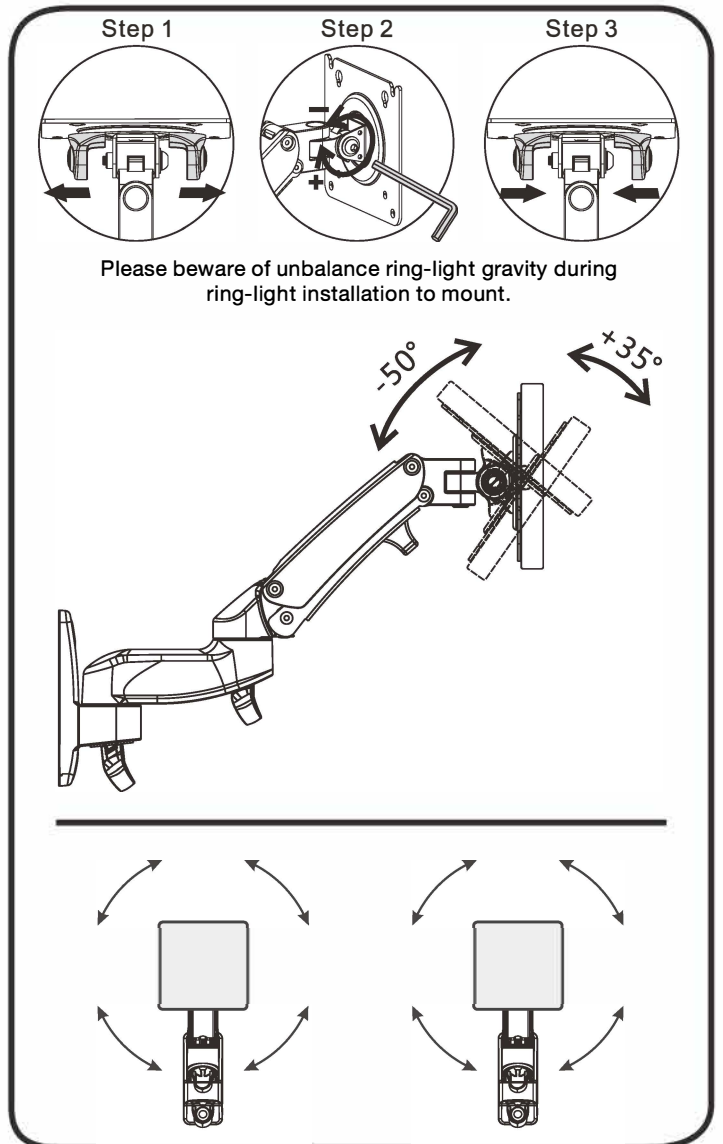
3 Attach the plate on the tablet



Setting static position



Setting tilt angle position and 360° rotation



If you have any questions regarding our products, please visit us at www.displays2go.com or contact D2G customer service 844-221-3388.